

# NORTHCHASE PLAZA

1130 NORTHCHASE PARKWAY SE | MARIETTA, GA 30067

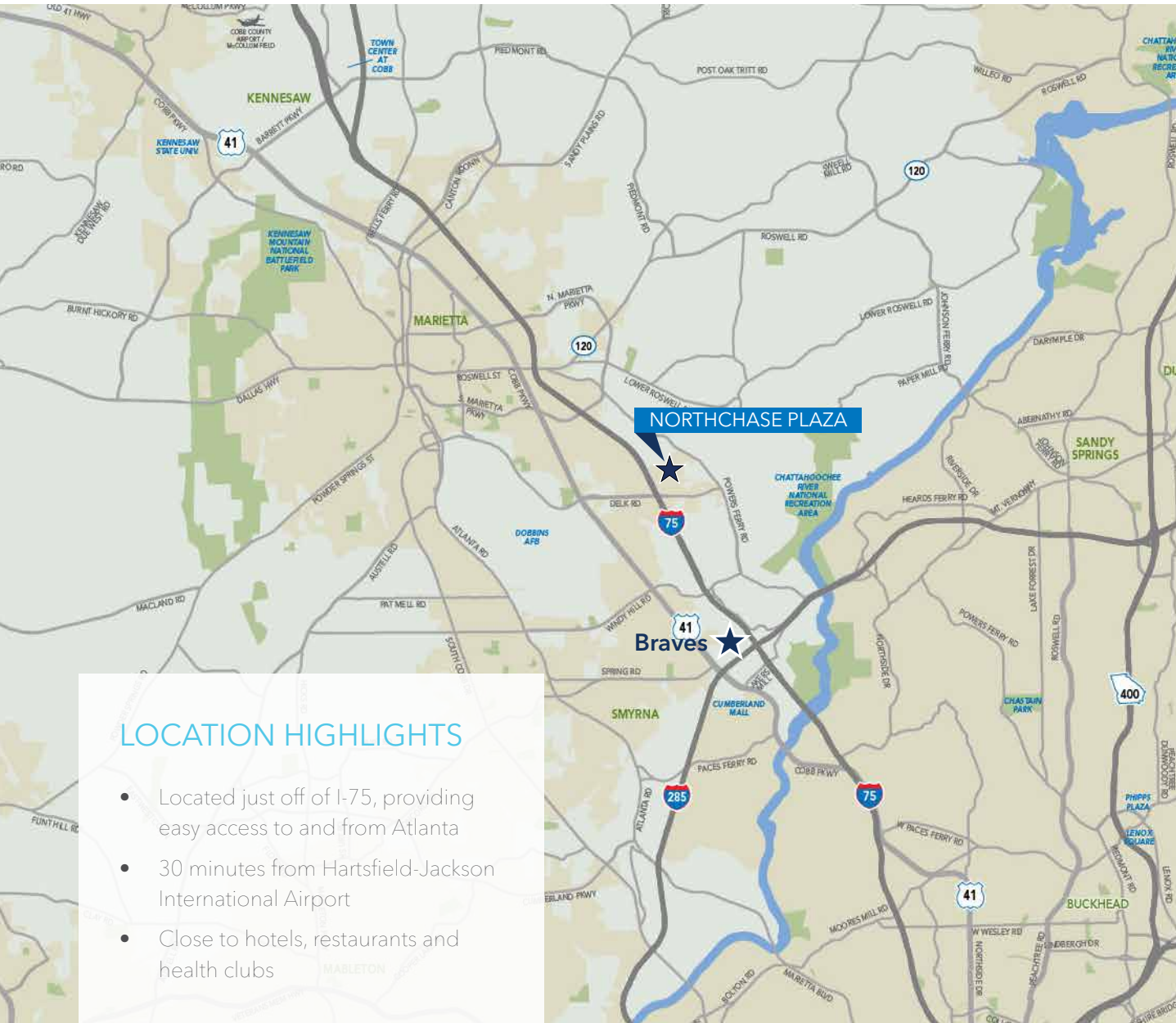
25,657 RSF AVAILABLE



IMMEDIATE ACCESS TO I-75

# NORTHCHASE PLAZA

1130 NORTHCHASE PARKWAY SE | MARIETTA, GA 30067



## PROPERTY HIGHLIGHTS

- Two-story, 59,332 RBA office building
- Secluded corporate campus setting
- Built in 1986
- Brick and glass exterior
- Class A finishes
- Efficient floor plates
- Signage opportunities available
- Pond, walking trails, lush landscape
- 5.8 parking spaces per 1,000 SF
- Key card after hours access; onsite roaming security

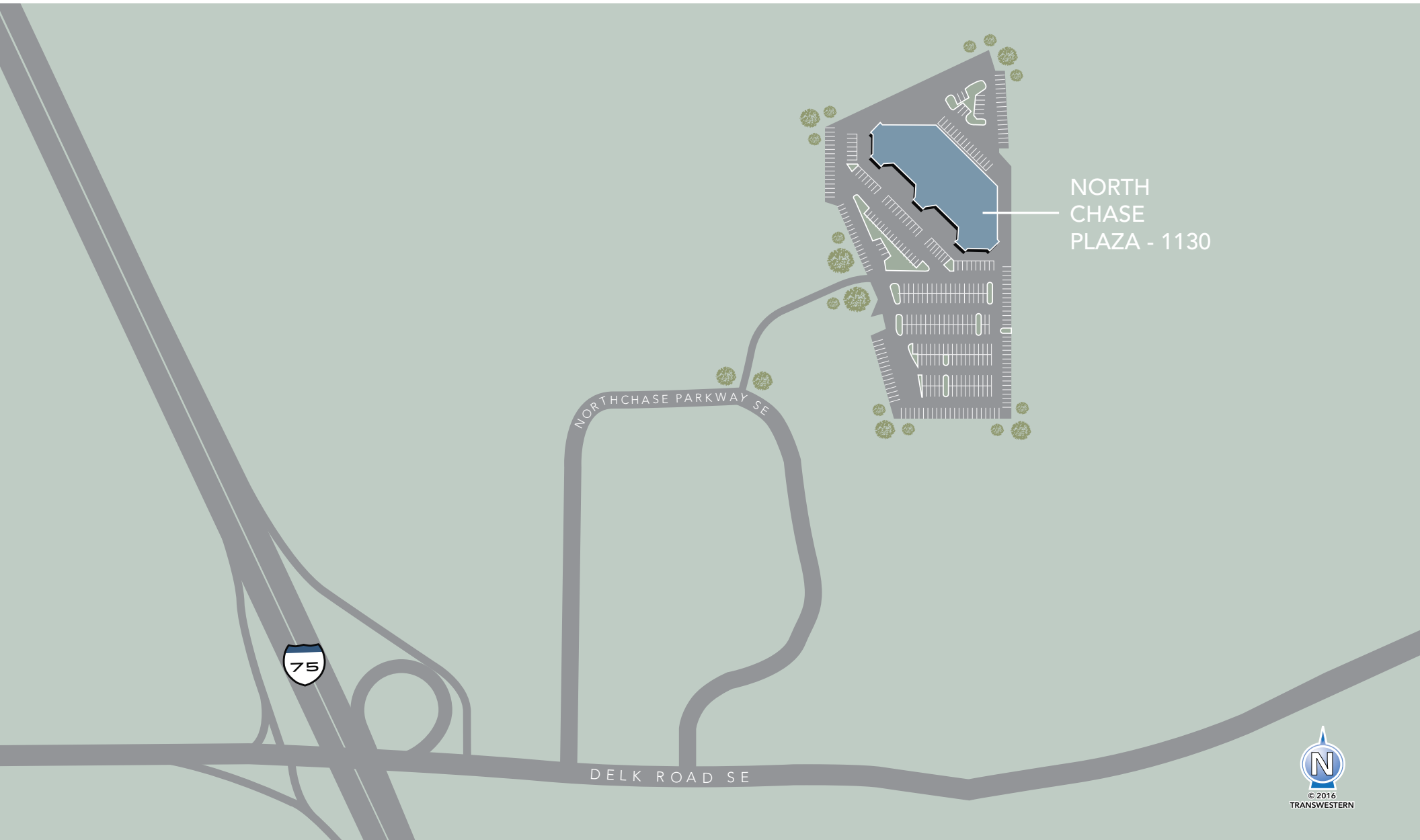
## LOCATION HIGHLIGHTS

- Located just off of I-75, providing easy access to and from Atlanta
- 30 minutes from Hartsfield-Jackson International Airport
- Close to hotels, restaurants and health clubs



# NORTHCHASE PLAZA

1130 NORTHCHASE PARKWAY SE | MARIETTA, GA 30067



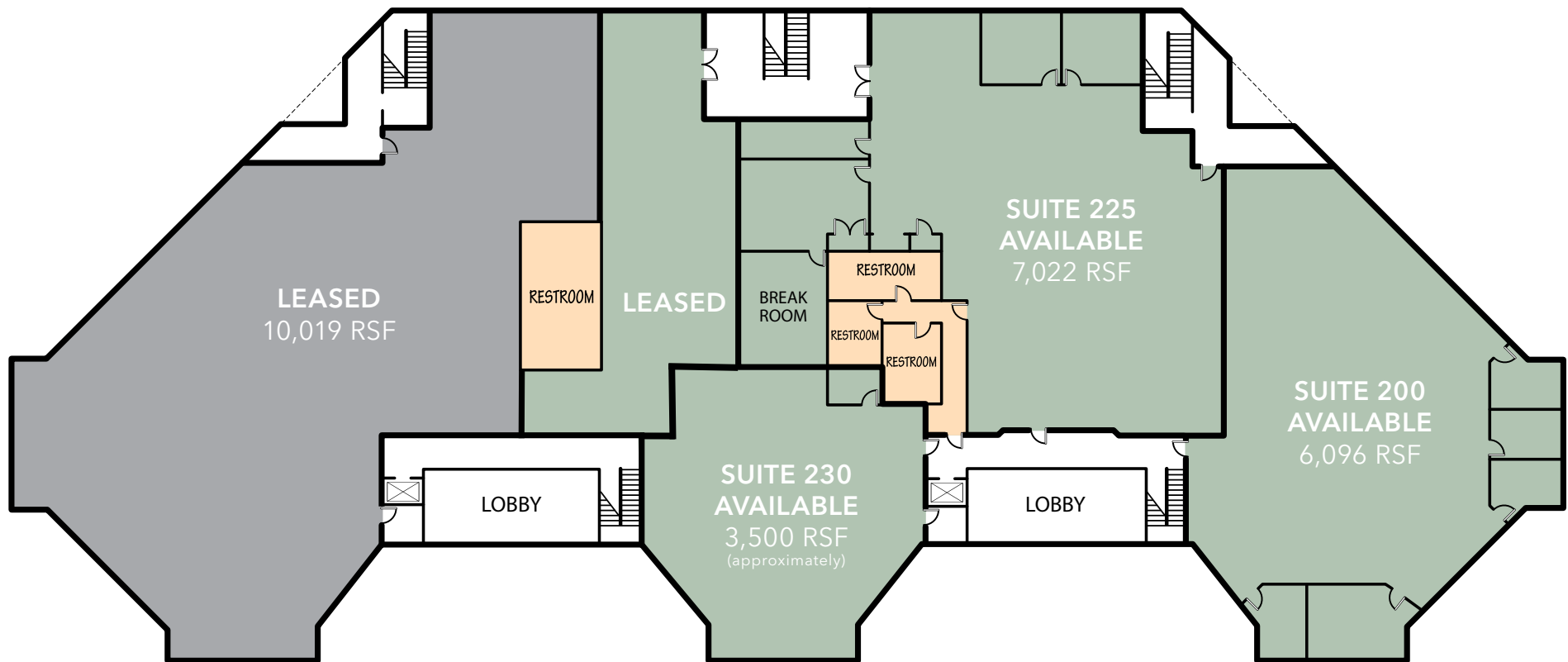
NORTH  
CHASE  
PLAZA - 1130



# NORTHCHASE PLAZA

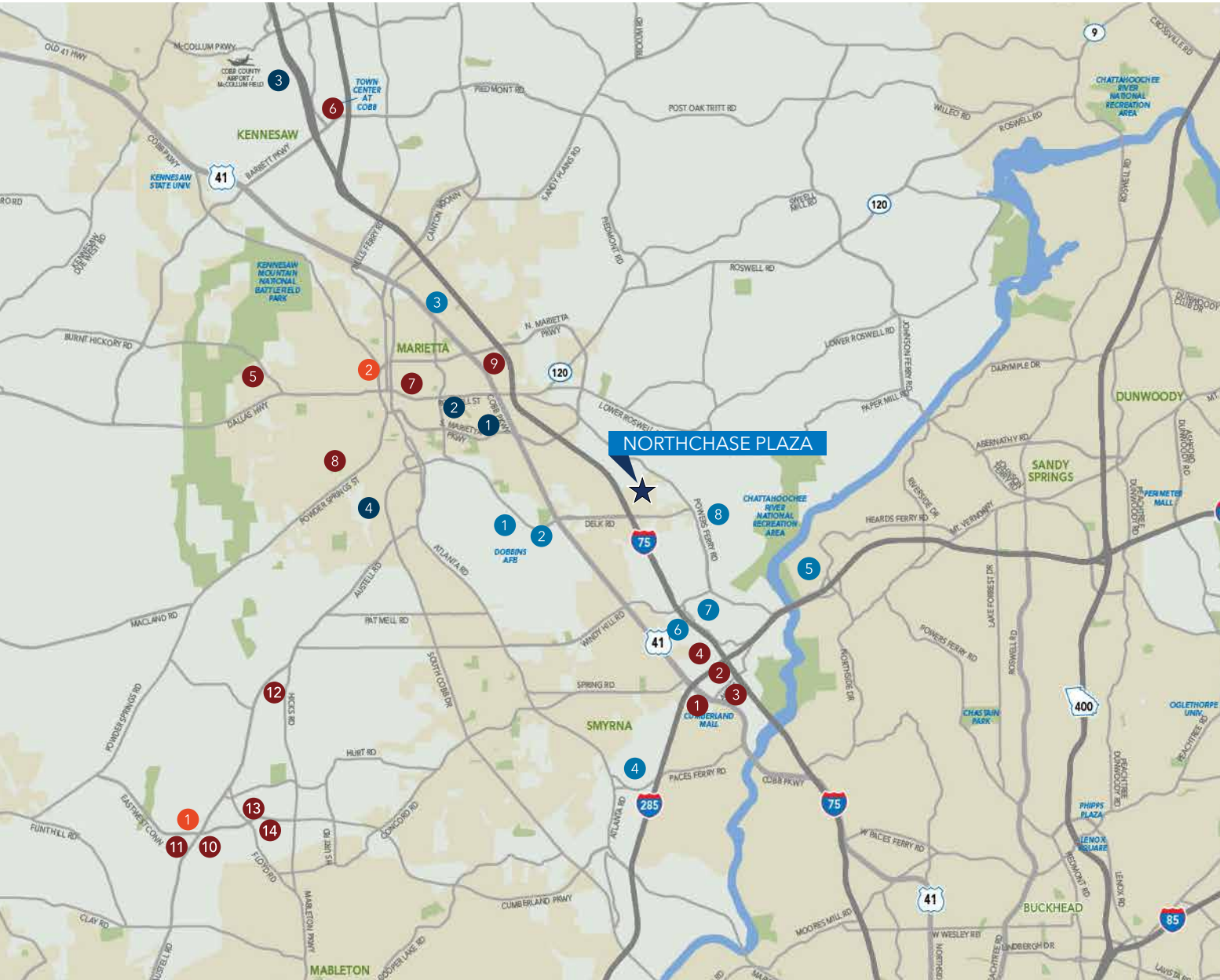
1130 NORTHCHASE PARKWAY SE | MARIETTA, GA 30067

## SECOND FLOOR PLAN



# NORTHCHASE PLAZA

1130 NORTHCHASE PARKWAY SE | MARIETTA, GA 30067



## MAJOR COMPANIES

- 1 Dobbins AFB
- 2 Lockheed Martin
- 3 Coca-Cola Enterprises
- 4 The Home Depot Corporate HQ
- 5 Graphic Packaging
- 6 NAPA Genuine Parts
- 7 GE Power & Water
- 8 BlueLinx Corporation

## HEALTHCARE

- 1 WellStar Cobb Hospital
- 2 WellStar Kennestone Hospital

## EDUCATION

- 1 Life University
- 2 KSU Marietta Campus
- 3 Kennesaw State University
- 4 Chattahoochee Technical College

## RECREATION & RETAIL

- 1 Cumberland Mall
- 2 Cobb Galleria Centre
- 3 Cobb Energy Performing Arts Centre
- 4 SunTrust Park - Atlanta Braves Stadium
- 5 Kennesaw Mountain
- 6 Town Center at Cobb
- 7 Historic Marietta Square
- 8 City Club Marietta
- 9 Six Flags White Water
- 10 East West Commons (Lowe's, Target)
- 11 East West Crossing (Kohl's, Ross)
- 12 Walmart Neighborhood Market
- 13 The Home Depot
- 14 Walmart Super Center

# NORTHCHASE PLAZA

1130 NORTHCHASE PARKWAY SE | MARIETTA, GA 30067



## LEASING INFORMATION:

**Todd Sypret**

404.842.6618

todd.sypret@transwestern.com

**Jeff Taylor**

404.842.6532

jeff.taylor@transwestern.com



3340 Peachtree Road NE, Suite 1000 | Atlanta, Georgia 30326  
T 404.842.6600 | F 404.842.6601 | [www.transwestern.com/atlanta](http://www.transwestern.com/atlanta)

The information provided herein was obtained from sources believed reliable; however, Transwestern makes no guarantees, warranties or representations as to the completeness or accuracy thereof. The presentation of this property is submitted subject to errors, omissions, change of price or conditions, prior sale or lease, or withdrawal without notice. Copyright © 2016 Transwestern.